



# Hardware Glossary



# Standard Pre-Assembled Door Hardware

## Cylindrical Lever Lockset

### *Entry Function*

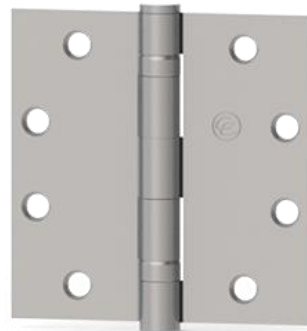
Latchbolt retracts via lever from either side, except when thumbturn locks outside lever; pushing thumbturn in locks outside lever, requiring key outside to unlock; operating inside lever unlocks outside lever; pushing in and turning thumbturn locks outside lever, requiring key at all times; turning inside lever does not unlock outside lever until thumbturn is manually turned to unlocked position; inside lever always retracts latchbolt

*\*other function options available*



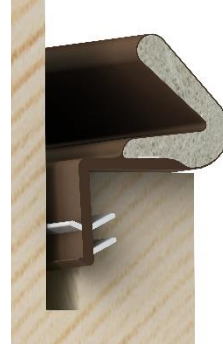
## Five-Knuckle Ball-Bearing Hinges

Attaches door jamb to door leaf



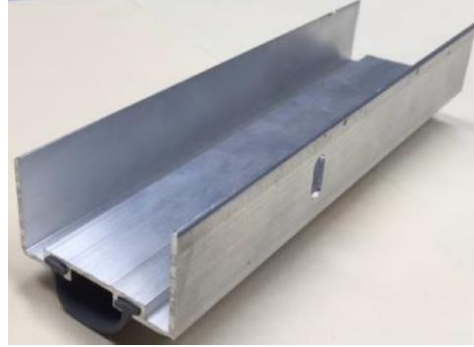
## Kerf Weather Seal

Fits into jambs and header to create a seal around the door frame; prevents precipitation from seeping through the door frame



**Concealed Sweep**

Vinyl strip in an aluminum carrier fitted to the bottom of the door leaf providing a weather-proof seal



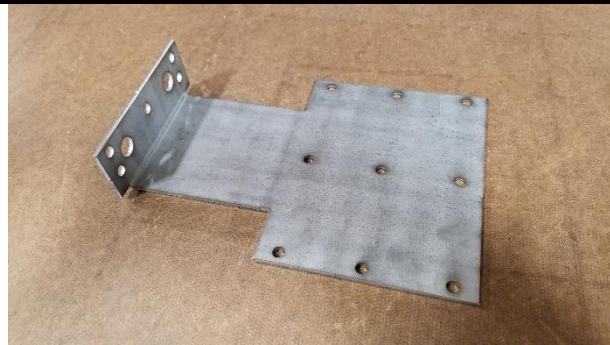
**Aluminum Threshold**

Attaches to both hinge- and strike-side jambs at bottom of door; secures door frame to the ground



**GLOBAL Standard Girt Clip**

Attaches subframe assembly to girt



# Additional Hardware Options

*\*available for an additional fee*

## Lever Locksets

### Mortise Lockset

#### *Dormitory Function*

Deadbolt can be set to locked/unlocked position via thumbturn inside or via key outside; mortise body installed inside door edge

*Stainless-steel finish*



## Exit Devices

### 4700 Series Rim Exit Device

– Panic bar mounted on door surface; latch protrudes from device rather than edge of door

– Opens via lever outside (optional); opens via push bar inside; locks/unlocks via key **only** from outside **only**

*Aluminum finish*



### 4500 Series Heavy Duty Rim Exit Device

– Panic bar mounted on door surface; latch protrudes from device rather than edge of door

– Opens via lever outside (optional); opens via push bar inside; locks/unlocks via key **only from outside only**

*Satin stainless-steel finish*



### Mortise Exit Device




– Panic bar mounted on door surface; latch protrudes from mortise body inside door leaf

– Opens via lever outside (optional); opens via push bar inside; locks/unlocks via key only from outside only

*Satin stainless-steel finish*



# Closers

<p><b>Heavy Duty Door Closer</b></p> <p><i>5300 Series</i></p> <p>Closer mechanism attaches door leaf to frame header; ensures door is not inadvertently left open</p> <p><i>Aluminum finish</i></p>	 A heavy-duty door closer with a rectangular aluminum body and a long, angled arm extending from the top. The arm is connected to a hinge mechanism on the door leaf.
<p><b>Heavy Duty Door Closer</b></p> <p><i>5200 Series</i></p> <p>Closer mechanism attaches door leaf to frame header; ensures door is not inadvertently left open</p> <p><i>Aluminum finish</i></p>	 A heavy-duty door closer with a rectangular aluminum body and a long, angled arm extending from the top. The arm is connected to a hinge mechanism on the door leaf.
<p><b>Hold-Open Door Closer</b></p> <p>Closer mechanism attaches door leaf to frame header; includes thumbturn mechanism to lock closer in position and hold door open ensures door is not inadvertently left open</p> <p><i>Aluminum finish</i></p>	 A hold-open door closer with a rectangular aluminum body and a vertical arm extending upwards. The arm is connected to a hinge mechanism on the door leaf.

## MISCELLANEOUS HARDWARE

### Thumbturn Deadbolt

Latchbolt can be set to locked/unlocked position via key from outside or via thumbturn inside

*Satin chrome finish*



### Latch Guard

Plate covers door reveal around cylindrical lockset; prevents tampering

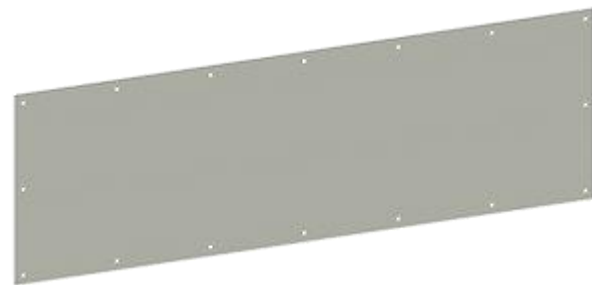
*Zinc-plated finish*



### 8"x34" Kick Protection Plate

Stainless steel plate installed at the inside bottom of the door leaf to prevent damage from shoes/boots

*Available in custom sizes / satin stainless-steel finish*



### Heavy Duty Crash Chain

Chain attaches to door leaf and header; prevents door from opening too wide

*Vinyl cover*



**Small Format IC Core**

Lockset cylinder with an interchangeable core; allows end customer to easily change keys when construction is complete

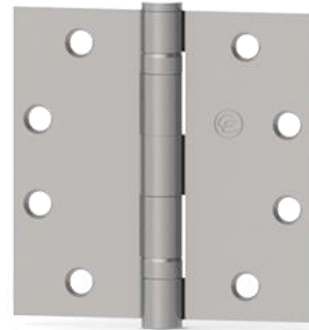
*Satin chrome finish*



**Five-Knuckle Stainless Steel Ball-Bearing Hinges**

Attaches door jamb to door leaf

*Satin stainless-steel finish*



**Cylindrical Electric Strike**

Replaces a standard cylindrical lockset strike and permits releasing of the door from remote control or special access equipment, such as a card reader



**Exit Device Electric Strike**

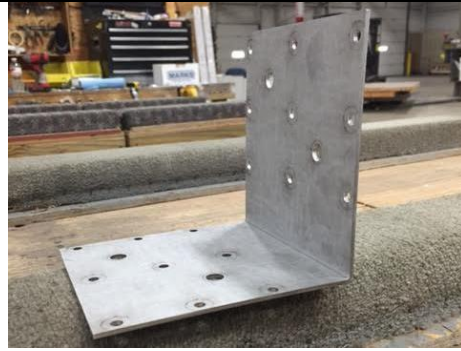
Replaces a standard exit device strike and permits releasing of the door from remote control or special access equipment, such as a card reader





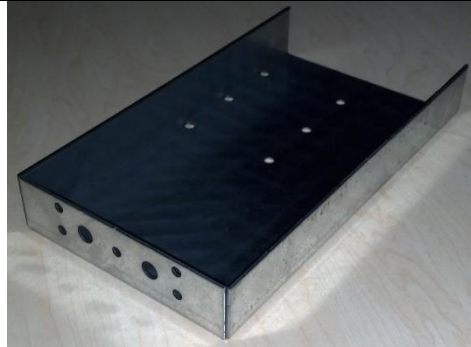
**Intermediate Girt Clip**

Attaches subframe assembly to intermediate girt



**10" HD Girt Clip**

Attaches subframe assembly to girt;  
extends subframe assembly to 7'6"



**20" HD Girt Clip**

Attaches subframe assembly to girt;  
extends subframe assembly to 8'0"

*10" HD Girt Clip pictured*

