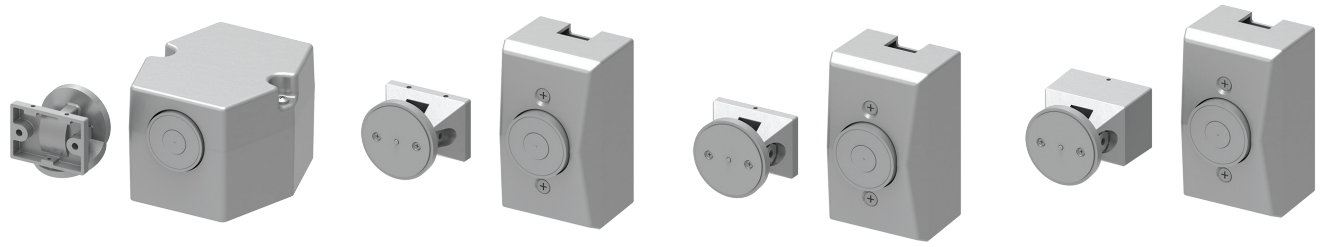


SEM7800 Series



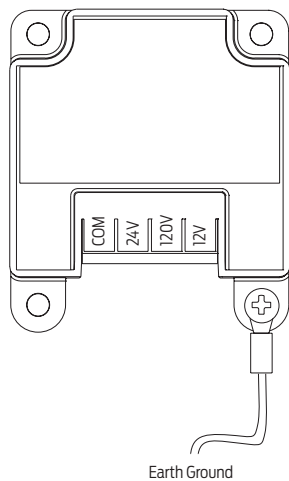
The Sentronic® SEM 7800 Series are heavy duty, electrically controlled door holding magnets. Magnets are fail safe and hold until the current is interrupted. A manual door closer is used to control and close the door. A choice of floor, recessed wall, or surface mounted wall magnets are available.

Features

Certifications	Grade 1 - ANSI A156.15, UL 10C for metal smoke barrier or labeled door, Life Safety Code, NFPA 101, 100 Hour Salt Spray, Meets BAA - Buy American Act
Voltage	Tri-voltage design with 35 lbs. of holding force
Housing	Die cast
Fasteners	Wood and Machine Screws (WMS)
Finishes/colors/powder coat	<ul style="list-style-type: none"> ■ 689 Aluminum paint ■ 695 Dark Bronze paint
Options	Available with armature extensions (see page 10)

Electrical data

Voltage input



Electrical schematic

Operation:
Electromagnets are typically used with fire alarm systems. Doors are held open in the non-alarm condition. When the fire alarm panel enters the alarm condition, power to the electromagnets is removed, the doors close under door closer control, and function as a manual door. When the fire alarm panel returns to the non-alarm condition, power is reapplied to the electromagnets and the doors can be held open again.

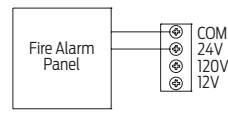


Fig. 1 24V AC/DC Wiring
Polarity is inimportant

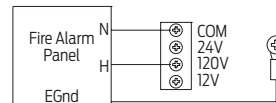


Fig. 2 120V AC Wiring

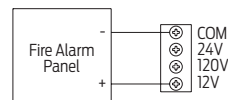


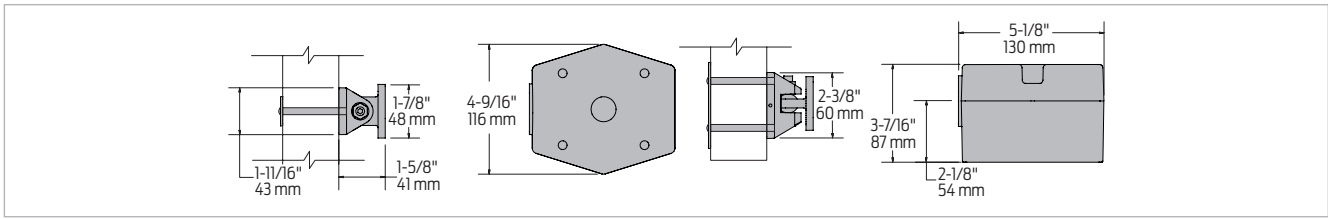
Fig. 3 12V DC Wiring
Polarity as shown

Electrical Specifications
Max. Current Draw
.030A @ 12VDC
.020A @ 24VAC/DC
.020A @ 120VAC

Holding force	35 lbs. @ nominal input voltage
Maximum current draw	<ul style="list-style-type: none"> ■ Standard profile recessed wall mount ■ 2" (51 mm) x 4" (102 mm) x 1 1/2" (38 mm)

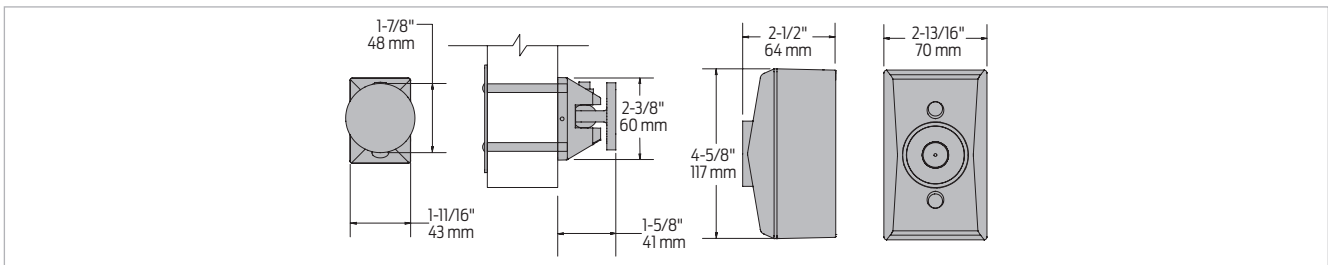
Mounting details

7820



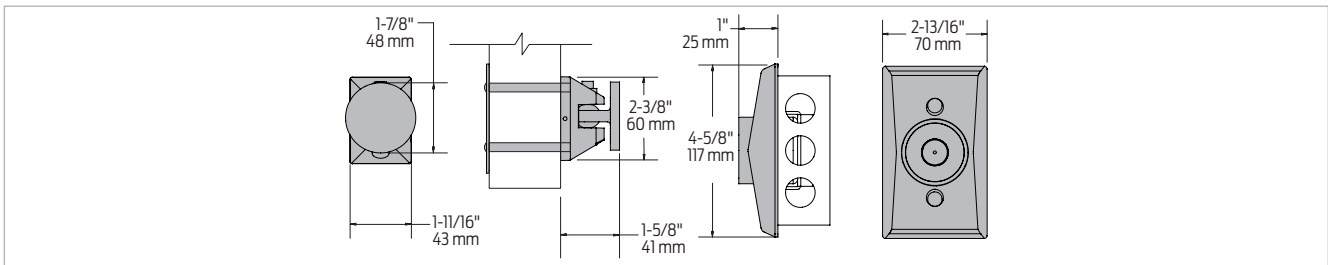
Mounting	Floor mounted
Total projection	6 3/4" (171 mm)

7830¹



Mounting	Surface wall mounted
Total projection	4 1/8" (105 mm)

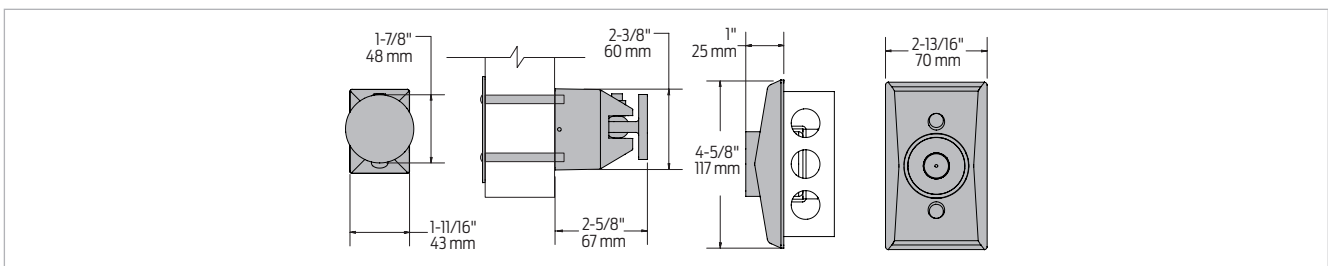
7840¹



Mounting	<ul style="list-style-type: none"> ■ Low profile recessed wall mount ■ 2" (51 mm) x 4" (102 mm) x 1 1/2" (38 mm)
Total projection	2 5/8" (67 mm)

Note: Outlet box not included.

7850¹



Mounting	<ul style="list-style-type: none"> ■ Standard profile recessed wall mount ■ 2" (51 mm) x 4" (102 mm) x 1 1/2" (38 mm)
Total projection	3 5/8" (92 mm)

Note: Outlet box not included.

1. Suitable for use in pocket door installations.

Accessories

Magnets



SEM7820-516
Magnet core assembly

- Magnet coil
- Standard



SEM7830(40)(50)-516
Magnet core assembly

- Magnet coil
- Standard

Armatures



SEM7820(30)(40)-825
Door armature

- Die cast low profile armature
- Standard



SEM7850-828
Door armature

- Die cast armature
- Standard

Note: Fastener kits for mounting must be ordered separately using part numbers ending in-515.

Fasteners

SEM7820-515
Fastener kit

- Hex key wrench
- Armature thru hole plate and surface mount clip
- Cement anchor
- Wood and machine screws

SEM7830-515
Fastener kit

- Hex key wrench
- Armature thru hole plate and surface mount clip
- Cement anchor
- Wood, machine and PHND screws

SEM7840-515
Fastener kit

- Hex key wrench
- Armature thru hole plate and surface mount clip
- Cement anchor
- Wood, machine and PHND screws

SEM7850-515
Fastener kit

- Hex key wrench
- Armature thru hole plate and surface mount clip
- Cement anchor
- Wood, machine and PHND screws

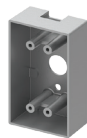
Cover



SEM7830(40)(50)-72
Standard cover

- Die cast cover
- Standard

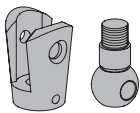
Box



SEM7830-268
Surface mount box

- Die cast surface wall mount box
- Standard

Extensions



SEM7810-514
Ball pivot/connection link

- Required for each door needing extension(s)
- Kit includes coupler link and ball pivot (alone serves as a 1 1/2" extension)



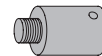
SEM7810-E050
Magnet extension 1/2"

- Metal
- Standard



SEM7810-E075
Magnet extension 3/4"

- Metal
- Standard



SEM7810-E100
Magnet extension 1"

- Metal
- Standard



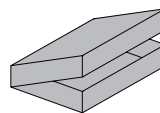
SEM7810-E200
Magnet extension 2"

- Metal
- Standard



Extension, SEM7810-E400
Magnet extension 4"

- Metal
- Standard



SEM7810-517
Magnet SEM extension kit

- Extension kit includes:
 - 107810SEM-E100
 - 57810SEM-E200
 - 107810SEM-E050
 - 207810SEM-514

Ordering information

How-to-order SEM7800 Series magnets

1. Select magnet series

- SEM7820
- SEM7830
- SEM7840
- SEM7850

2. Select finish

- Standard powder coat _____
- Aluminum (689), Dark Bronze (695) paint

Magnets will be shipped with:

- Die cast housing
- Cover
- Armatures
- Wood and machine screws

SEM 7810 extensions

Magnet series

- Ball Pivot/Connection Link (SEM7810-514) (qty.)
- Magnet Extension 1/2" (SEM7810-E050) (qty.)
- Magnet Extension 3/4" (SEM7810-E075) (qty.)
- Magnet Extension 1" (SEM7810-E100) (qty.)
- Magnet Extension 2" (SEM7810-E200) (qty.)
- Magnet Extension 4" (SEM7810-E400) (qty.)
- Magnet SEM Extension Kit (SEM7810-517) (qty.)