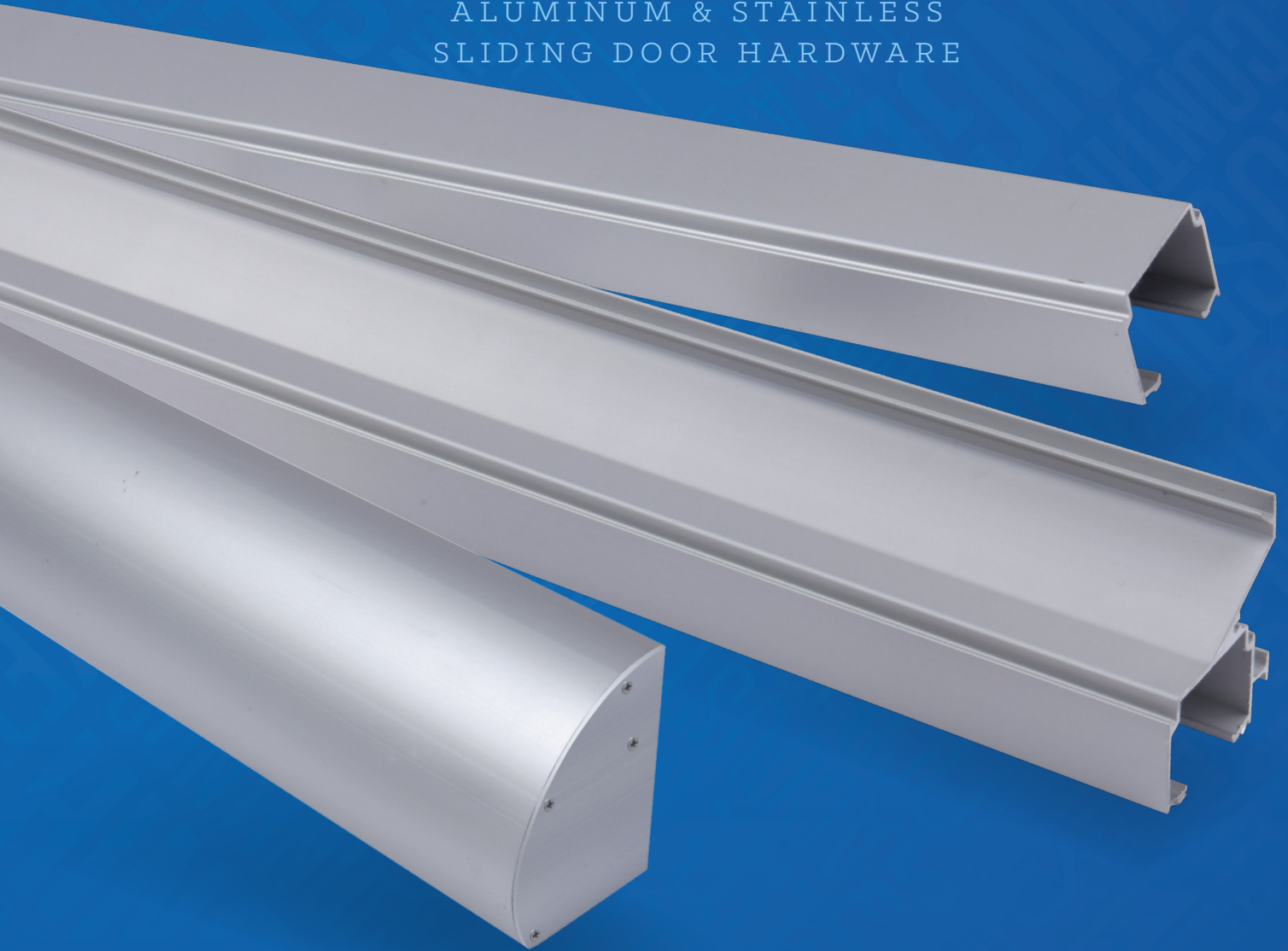




SLIDING

ALUMINUM & STAINLESS
SLIDING DOOR HARDWARE





SLIDING DOOR HARDWARE INDEX:

| | Page |
|---|--------------------|
| Aluminum: | |
| Bi-Fold Sliding Door Hardware | SL4 |
| Bi-Parting Sliding Door Hardware | SL6, SL7, SL8, SL9 |
| By-Passing Sliding Door Hardware | SL2, SL3, SL5 |
| Side Wall Mount Sliding Door Hardware | SL6 |
| Pocket Door Hardware | SL7 |
| Pocket Door Hardware with Frame Kit | SL8, SL9 |
| Stainless Steel: | |
| Barn Door Hardware — Side Mount | SL11 |
| Barn Door Hardware — Top Mount | SL10 |
| Accessories: | |
| Drywall Spacer for Stainless Steel Track | SL15 |
| Pocket Door Kit-7'-9' Extension Kit | SL16 |
| Sliding Door Hardware Accessories | SL12-SL18 |
| Sliding Door Hardware Adapter Kit | SL17 |
| Sliding Door Hardware -Converging Kit | SL18 |
| Soft Close for Aluminum Sliding Door Hardware | SL14 |

NUMERICAL INDEX:

| | | | | | |
|--------------------------|----------|-----------------------------|-----|-------------------|------|
| SC | SL14 | SLAL-250-BP-2DR | SL5 | SLAL-250-SW | SL7 |
| SCBY | SL14 | SLAL-250-BP-4DR | SL5 | SLSS-FG | SL12 |
| SL-BCG | SL12 | SLAL-250-PD | SL7 | SLSS-DWS-6 | SL15 |
| SL-RD | SL6 | SLAL-250-PDKIT | SL8 | SLSS-DWS-8 | SL15 |
| SL-SQ18 | SL6 | SLAL-250-PDKIT-EXT | SL9 | SLSSI-6 | SL10 |
| SL-SQ20 | SL5, SL7 | SLAL-250-PDKT-EXT-48 | SL9 | SLSSI-6-SC | SL10 |
| SL-WG | SL12 | SLAL-250-PDKIT-48"DR | SL8 | SLSSI-8 | SL10 |
| SLAL-CNVG-KIT | SL18 | SLAL-250-PDKIT-6 | SL8 | SLSSI-8-SC | SL10 |
| SLAL EXT KIT | SL16 | SLAL-250-PDKIT-6-48" | SL8 | SLSS2-6 | SL11 |
| SLAL EXT KIT 48"DR | SL16 | SLAL-250-PDKIT-6-EXT | SL9 | SLSS2-6-SC | SL11 |
| SLAL-134-KIT | SL17 | SLAL-250-PDK-6-EXT48" | SL9 | SLSS2-8 | SL11 |
| SLAL-75-BF2DR | SL4 | SLAL-250-PDKIT-6M | SL8 | SLSS2-8-SC | SL11 |
| SLAL-75-BF4DR | SL4 | SLAL-250-PDKT-6M-48" | SL8 | SWBP-BRKT | SL13 |
| SLAL-75-BP | SL2 | SLAL-250-PDKT-6M-EXT | SL9 | SWPD-LPBRKT | SL13 |
| SLAL-75-BPF | SL3 | SLAL-250-PK-6M-EXT48 | SL9 | | |

RATING SYMBOLS LEGEND



ANSI/BHMA CERTIFIED. Certified sliding door hardware complies with American National Standard for Sliding and Folding Door Hardware ANSI/BHMA A156.14, and is listed in the BHMA Certified Products Directory.

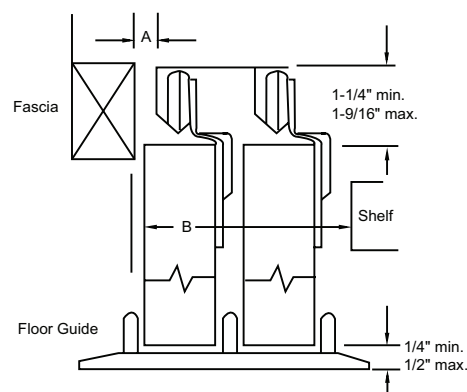
BY-PASS

SLIDING DOOR HARDWARE

ALUMINUM SIDE MOUNT TRACK SYSTEM

- Designed for Multi-family Applications
- Up to 1 3/8" Doors
- Max Weight Load 75 lbs.
- 5-year Warranty

| SKU | TRACK LENGTH |
|---------------|--------------|
| SLAL-75-BP-48 | 48" |
| SLAL-75-BP-60 | 60" |
| SLAL-75-BP-72 | 72" |
| SLAL-75-BP-96 | 96" |



| DOOR THICKNESS | 3/4" | 1 3/8" |
|----------------|--------|--------|
| DIMENSION A | 0" | 7/8" |
| DIMENSION B | 2 3/4" | 4" |

Complete Kits Include:

- (1) Track
- (1) Floor Guide With Steel Bracket
- (2) Front Hangers
- (2) Back Hangers
- (2) Brass Pulls
- (2) Chrome Pulls



BY-PASS with FASCIA

SLIDING DOOR HARDWARE

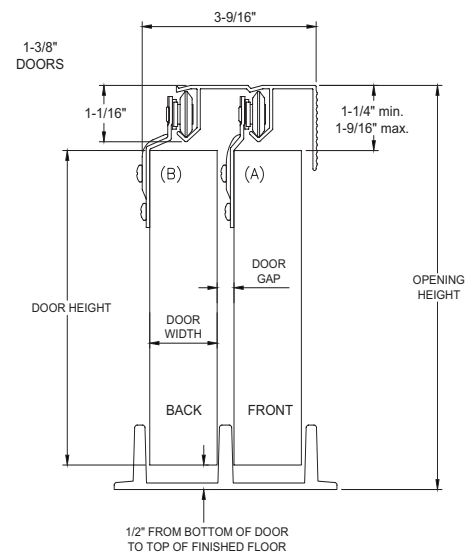
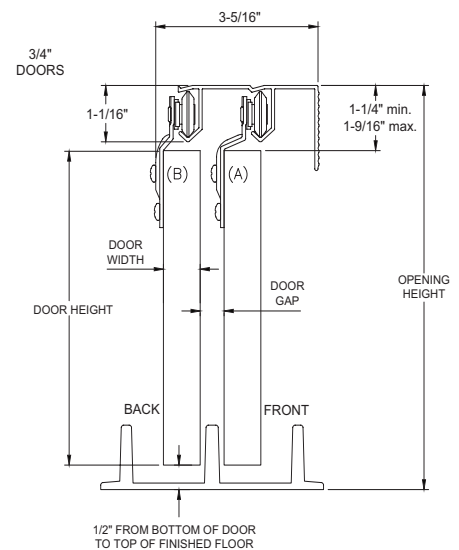
ALUMINUM SIDE MOUNT TRACK SYSTEM

- Designed for Multi-family Applications
- Up to 1⅜" Doors
- For Sliding Doors up to 75 lbs. Each
- 5-year Warranty

| SKU | TRACK LENGTH |
|----------------|--------------|
| SLAL-75-BPF-48 | 48" |
| SLAL-75-BPF-60 | 60" |
| SLAL-75-BPF-72 | 72" |
| SLAL-75-BPF-96 | 96" |

Complete Kits Include:

- (1) Track
- (1) Floor Guide With Steel Bracket
- (2) Front Hangers
- (2) Back Hangers
- (2) Brass Pulls
- (2) Chrome Pulls



BI-FOLD

SLIDING DOOR HARDWARE

ALUMINUM TOP MOUNT TRACK SYSTEM

- Designed for Multi-family Applications
- 1 $\frac{3}{8}$ " To 1 $\frac{3}{4}$ " Doors
- Max Weight Load 75 lbs.
- 5-year Warranty

TWO DOOR SYSTEMS

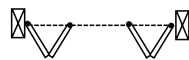


| SKU | TRACK LENGTH |
|------------------|--------------|
| SLAL-75-BF2DR-36 | 36" |
| SLAL-75-BF2DR-48 | 48" |

Two Door Complete Kits Include:

- | | |
|------------------|-------------------|
| (1) Track | (1) Aligner |
| (1) Top Pivot | (1) Wood Knob |
| (1) Bottom Pivot | (4) Brass Hinges |
| (1) Roller | (4) Chrome Hinges |
| (1) Snugger | |

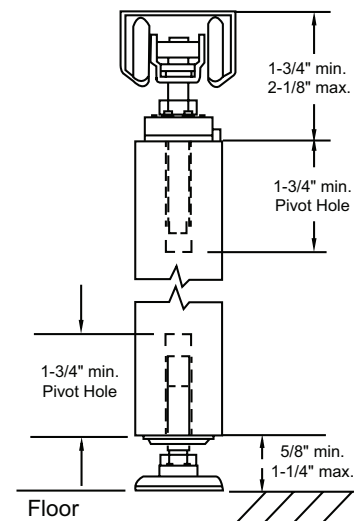
FOUR DOOR SYSTEMS



| SKU | TRACK LENGTH |
|------------------|--------------|
| SLAL-75-BF4DR-60 | 60" |
| SLAL-75-BF4DR-72 | 72" |
| SLAL-75-BF4DR-96 | 96" |

Four Door Complete Kits Include:

- | | |
|-------------------|-------------------|
| (1) Track | (2) Aligners |
| (2) Top Pivots | (2) Wood Knobs |
| (2) Bottom Pivots | (8) Brass Hinges |
| (2) Rollers | (8) Chrome Hinges |
| (2) Snuggers | |



BY-PASS

SLIDING DOOR HARDWARE

ALUMINUM TOP MOUNT TRACK SYSTEM

- ▶ Commercial Grade for 1⅜" To 1¾" Doors
- ▶ Max Weight Load 250 lbs.
- ▶ ANSI/BHMA A156.14 Grade 1 Certified to 100,000 Cycles Including Soft Close Feature
- ▶ Hangers with Heavy Duty Ball Bearing Wheels
- ▶ 5-Year Warranty

TWO DOOR SYSTEMS

| SKU | TRACK LENGTH |
|---------------------|--------------|
| SLAL-250-BP-2DR-48 | 48" |
| SLAL-250-BP-2DR-60 | 60" |
| SLAL-250-BP-2DR-72 | 72" |
| SLAL-250-BP-2DR-96 | 96" |
| SLAL-250-BP-2DR-144 | 144" |

Complete Kits Include:

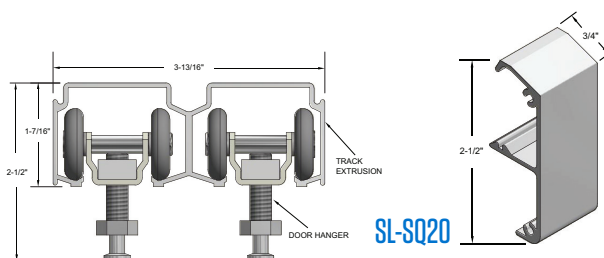
- (1) Track – Mill Finish
- (2) Universal Hardware Packs,
Each Consist Of:
 - (2) Ball Bearing Heavy Duty Hangers
 - (2) Snap-In Door Brackets
 - (2) In-Track Stops
 - (1) Angle Stop
 - (1) Bumper Stop
 - (1) Door Guide
- Heavy Duty Floor Guides

FOUR DOOR SYSTEMS

| SKU | TRACK LENGTH |
|---------------------|--------------|
| SLAL-250-BP-4DR-48 | 48" |
| SLAL-250-BP-4DR-60 | 60" |
| SLAL-250-BP-4DR-72 | 72" |
| SLAL-250-BP-4DR-96 | 96" |
| SLAL-250-BP-4DR-144 | 144" |

Complete Kits Include:

- (1) Track – Mill Finish
- (4) Universal Hardware Packs,
Each Consist Of:
 - (2) Ball Bearing Heavy Duty Hangers
 - (2) Snap-In Door Brackets
 - (2) In-Track Stops
 - (1) Angle Stop
 - (1) Bumper Stop
 - (1) Door Guide
- Heavy Duty Floor Guides



OPTIONS:

- ▶ Soft Close / Open – Specify “SCBY”
For Both Directions Order (2) Sets SCBY
- ▶ Bottom Channel Guide SL-BCG (Page SL12)
- ▶ Snap-On Fascia (SL-SQ20) – Clear Anodized –
Shown Above
- ▶ Sidewall Mount Brackets SWBP-BRKT
(Page SL13)



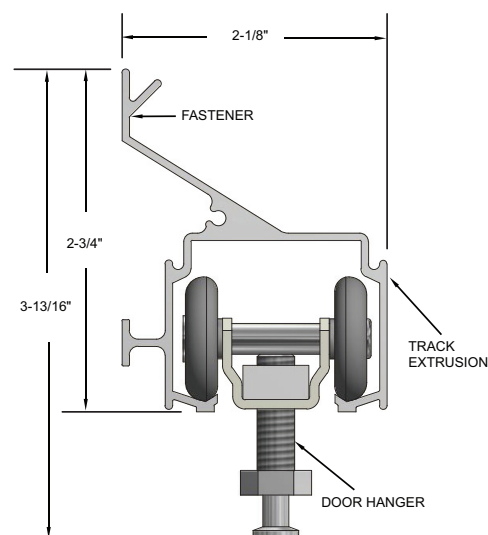
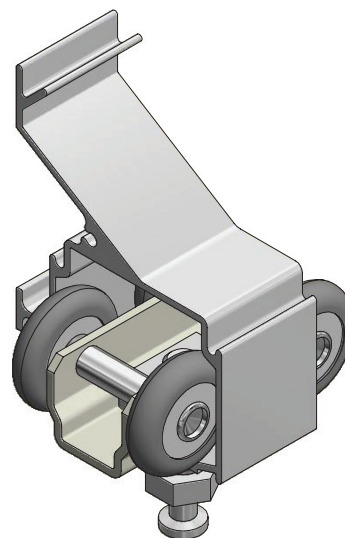
SIDE WALL MOUNT

SLIDING DOOR HARDWARE

ALUMINUM TOP MOUNT TRACK SYSTEM

- Commercial Grade for 1 $\frac{3}{8}$ " To 1 $\frac{3}{4}$ " Doors
- Max Weight Load 250 lbs.
- ANSI/BHMA A156.14 Grade 1 Certified to 100,000 Cycles Including Soft Close Feature
- Hangers with Heavy Duty Ball Bearing Wheels
- $\frac{3}{8}$ " Clearance Between Wall and Door on 1 $\frac{3}{4}$ " Thick Doors
- 5-year Warranty

| SKU | TRACK LENGTH |
|-----------------|--------------|
| SLAL-250-SW-48 | 48" |
| SLAL-250-SW-60 | 60" |
| SLAL-250-SW-72 | 72" |
| SLAL-250-SW-96 | 96" |
| SLAL-250-SW-144 | 144" |

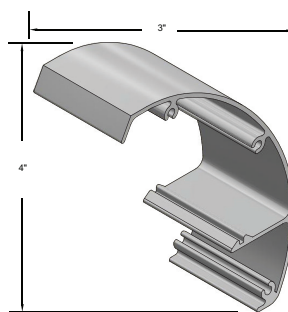


Complete Kits Include:

- (1) Track – Mill Finish
- (1) Universal Hardware Pack, Consists Of:
 - (2) Ball Bearing Heavy Duty Hangers
 - (2) Snap-In Door Brackets
 - (2) In-Track Stops
 - (1) Angle Stop
 - (1) Bumper Stop
 - (1) Door Guide
 - Heavy Duty Floor Guides

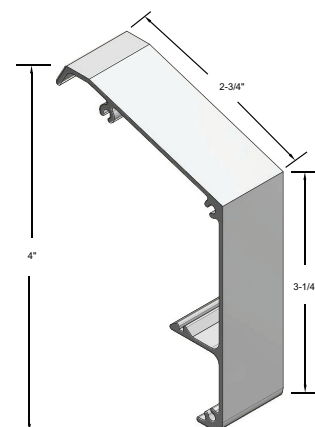
OPTIONS:

- Soft Close / Open – Specify “SC”
For Both Directions Order SCBY
- Wall Mounted Guide SL-WG – included in Universal Hardware Pack (Page SL12)
- Bottom Channel Guide SL-BCG (Page SL12)
- Snap-on Fascias – Clear Anodized – Shown Right



SL-RD

Includes End Caps



SL-SQ18

POCKET DOOR

SLIDING DOOR HARDWARE

ALUMINUM TOP MOUNT TRACK SYSTEM

- Commercial Grade for 1 $\frac{3}{8}$ " To 1 $\frac{3}{4}$ " Doors
- Max Weight Load 250 lbs.
- ANSI/BHMA A156.14 Grade 1 Certified to 100,000 Cycles Including Soft Close Feature
- Hangers with Heavy Duty Ball Bearing Wheels
- 5-Year Warranty

| SKU | TRACK LENGTH |
|-----------------|--------------|
| SLAL-250-PD-48 | 48" |
| SLAL-250-PD-60 | 60" |
| SLAL-250-PD-72 | 72" |
| SLAL-250-PD-96 | 96" |
| SLAL-250-PD-144 | 144" |



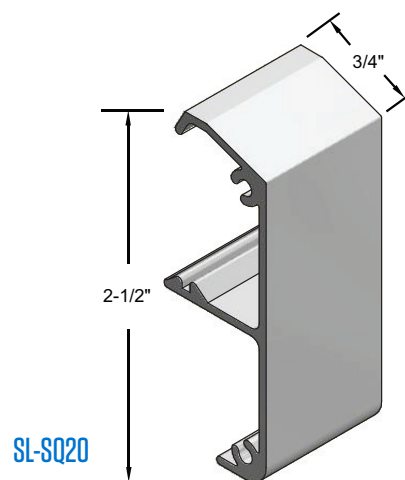
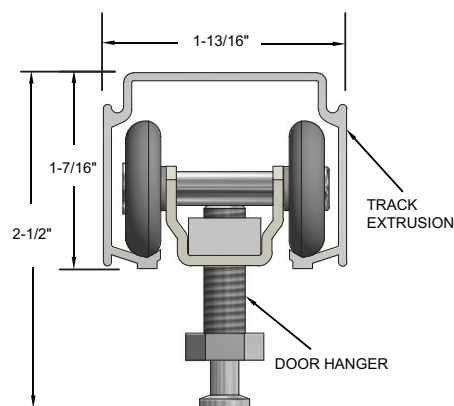
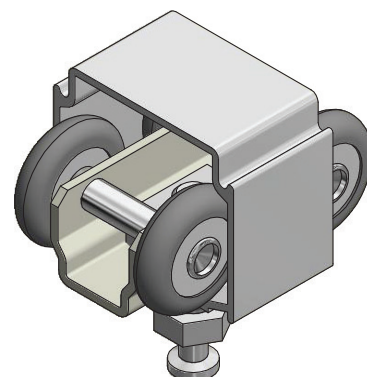
Order two sets for Bi-Parting applications

Complete Kits Include:

- (1) Track – Mill Finish
- (1) Universal Hardware Pack, Consists Of:
 - (2) Ball Bearing Heavy Duty Hangers
 - (2) Snap-In Door Brackets
 - (2) In-Track Stops
 - (1) Angle Stop
 - (1) Bumper Stop
 - (1) Door Guide
 - Heavy Duty Floor Guides

OPTIONS:

- Soft Close / Open – Specify "SC"
For Both Directions Order SCBY
- Wall Mounted Guide SL-WG (page SL12)
- Bottom Channel Guide SL-BCG (page SL12)
- Snap-On Fascia (SL-SQ20) – Clear Anodized – Shown Right



POCKET DOOR

SLIDING DOOR HARDWARE FRAME KIT

ALUMINUM TOP MOUNT TRACK SYSTEM

- Commercial Grade for 1⅜" To 1¾" Doors
(For 1¾" Door Applications, Also Order the SLAL-134-KIT)
- Max Weight Load 250 lbs.
- ANSI/BHMA A156.14 Grade 1 Certified to 100,000 Cycles Including Soft Close Feature
- Hangers with Heavy Duty Ball Bearing Wheels
- 5-year Warranty
- Patent Pending

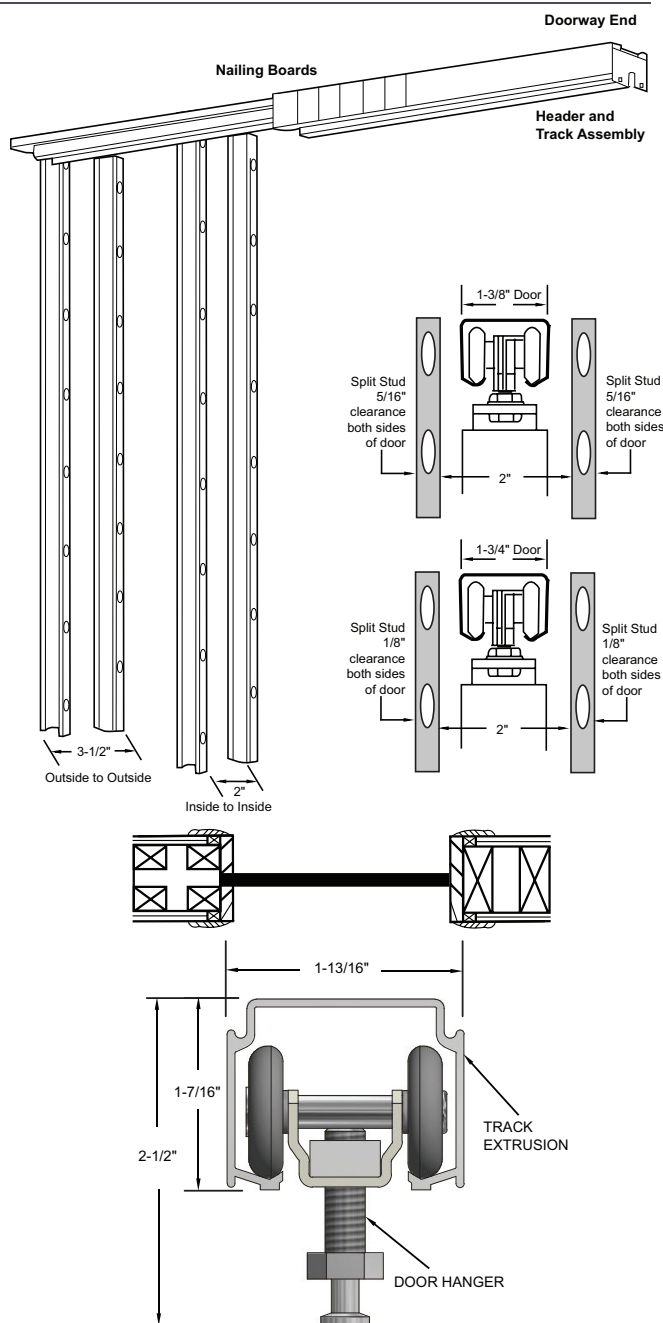


| SKU | APPLICATION | FOR UP TO: |
|-----------------------|---------------------------|------------|
| SLAL-250-PDKIT | 4" Wood or Metal Stud | 3/0 x 7/0 |
| SLAL-250-PDKIT-48"DR | 4" Wood or Metal Stud | 4/0 x 7/0 |
| SLAL-250-PDKIT-6 | 6" Wood Stud (5½" Header) | 3/0 x 7/0 |
| SLAL-250-PDKIT-6-48" | 6" Wood Stud (5½" Header) | 4/0 x 7/0 |
| SLAL-250-PDKIT-6M | 6" Metal Stud (6" Header) | 3/0 x 7/0 |
| SLAL-250-PDKIT-6M-48" | 6" Metal Stud (6" Header) | 4/0 x 7/0 |

Order two sets for Bi-Parting applications

Complete Kits Include:

- (1) Header Track Assembly
- (1) Universal Hardware Pack, Consists Of:
 - (2) Ball Bearing Heavy Duty Hangers
 - (2) Snap-In Door Brackets
 - (2) In-Track Stops
 - (1) Angle Stop
 - (1) Bumper Stop
 - (1) Door Guide
 - Heavy Duty Floor Guides
- (1) Pocket Frame Kit
 - Jamb Stiffeners
 - (4) 36" Openings
 - (6) 48" Openings
 - Floor Brackets
 - (2) 36" Openings
 - (3) 48" Openings
 - (1) End Bracket



OPTIONS:

- Soft Close / Open – Specify "SC" For Both Directions Order SCBY
- Wall Mounted Bottom Guide SL-WG
- Bottom Channel Guide SL-BCG (Page SL12)
- Adapter Kit Used with SLAL-250-PDKIT and SLAL-250-PDKIT-48"DR When Installing 1¾" Thick Doors "SLAL-134-KIT"
- SLAL-250-PDKIT-48"DR comes with 6 split studs. SLAL-134-KIT comes with 4 spacers and 2 floor plates. Be sure to order enough SLAL-134-KIT for 6 split studs per opening
- Converging Kit Used to Join Headers in Bi-Part Openings "SLAL-CNVG-KIT"

POCKET DOOR

SLIDING DOOR HARDWARE FRAME KIT FOR UP TO 9/0 DOORS

ALUMINUM TOP MOUNT TRACK SYSTEM

- Commercial Grade for 1 $\frac{3}{8}$ " To 1 $\frac{3}{4}$ " Doors
(For 1 $\frac{3}{4}$ " Door Applications, Also Order the SLAL-134-KIT)
- Max Weight Load 250 lbs.
- ANSI/BHMA A156.14 Grade 1 Certified to 100,000 Cycles Including Soft Close Feature
- Hangers with Heavy Duty Ball Bearing Wheels
- 5-year Warranty
- Patent Pending

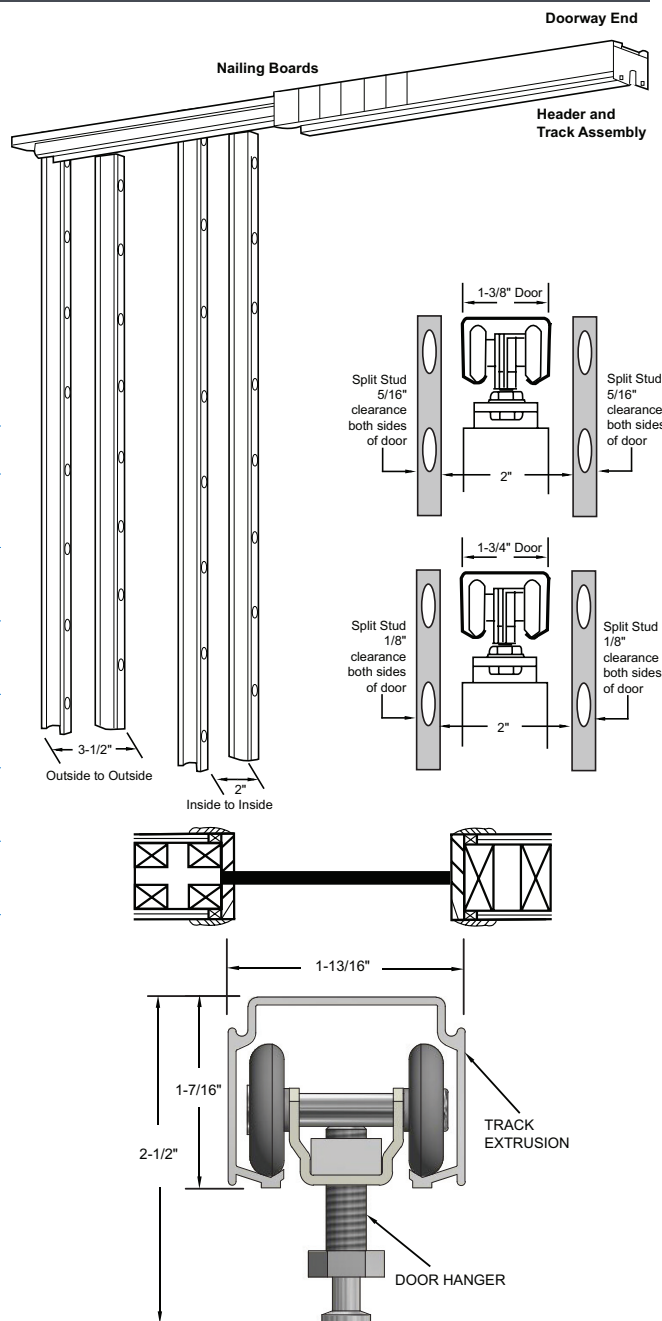


| SKU | APPLICATION | FOR UP TO: |
|-----------------------|---|------------|
| SLAL-250-PDKIT-EXT | 4" Wood or Metal Stud | 3/0 x 9/0 |
| SLAL-250-PDKT-EXT-48 | 4" Wood or Metal Stud | 4/0 x 9/0 |
| SLAL-250-PDKIT-6-EXT | 6" Wood Stud (5 $\frac{1}{2}$ " Header) | 3/0 x 9/0 |
| SLAL-250-PDK-6-EXT48" | 6" Wood Stud (5 $\frac{1}{2}$ " Header) | 4/0 x 9/0 |
| SLAL-250-PDKT-6M-EXT | 6" Metal Stud (6" Header) | 3/0 x 9/0 |
| SLAL-250-PK-6M-EXT48 | 6" Metal Stud (6" Header) | 4/0 x 9/0 |

Order two sets for Bi-Parting applications

Complete Kits Include:

- (1) Header Track Assembly
- (1) Universal Hardware Pack, Consists Of:
 - (2) Ball Bearing Heavy Duty Hangers
 - (2) Snap-In Door Brackets
 - (2) In-Track Stops
 - (1) Angle Stop
 - (1) Bumper Stop
 - (1) Door Guide
 - Heavy Duty Floor Guides
- (1) Pocket Frame Kit
 - Jamb Stiffeners
 - (4) 36" Openings
 - (6) 48" Openings
 - (4) Jamb Stiffener Extensions
 - (4) Jamb Splice Brackets
 - Floor Brackets
 - (2) 36" Openings
 - (3) 48" Openings
 - (1) End Bracket



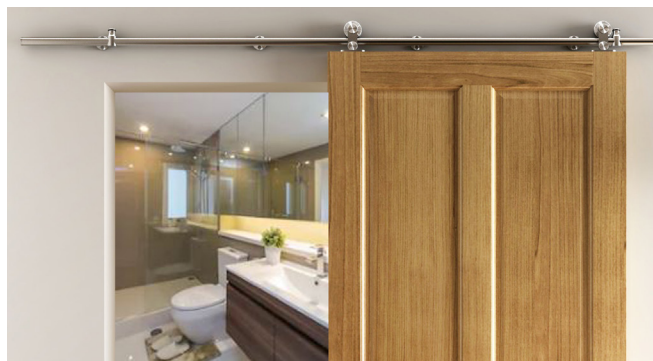
OPTIONS:

- Soft Close / Open – Specify "SC" For Both Directions Order SCBY
- Wall Mounted Bottom Guide SL-WG
- Bottom Channel Guide SL-BCG (page SL12)
- Adapter Kit Used with SLAL-250-PDKIT-EXT and SLAL-250-PDKIT-EXT-48 When Installing 1 $\frac{3}{4}$ " Thick Doors "SLAL-134-KIT"
- SLAL-250-PDKT-EXT-48 comes with 6 split studs. SLAL-134-KIT comes with 4 spacers and 2 floor plates. Be sure to order enough SLAL-134-KIT for 6 split studs per opening
- Converging Kit Used to Join Headers in Bi-Part Openings "SLAL-CNVG-KIT"

BARN DOOR TOP MOUNT

SLIDING DOOR HARDWARE

- Fits 1" To 2" Thick Door Panel
- Brushed Stainless Steel 304
- Side Wall Mount
- Nylon Coated Stainless Steel Wheels for Smooth Operation
- Max Weight Load 220 lbs.
- 5 year Warranty
- Order Two Sets for Bi-parting Applications



STAINLESS STEEL TOP MOUNT ROUND TRACK SYSTEM

| SKU | TRACK LENGTH |
|---------|-----------------------------------|
| SLSSI-6 | 78 ³ / ₄ " |
| SLSSI-8 | 98 ⁷ / ₁₆ " |

Complete Kits Include:

- | | |
|-------------|-----------------|
| (1) Track | (2) Door Stops |
| (2) Hangers | (1) Floor Guide |

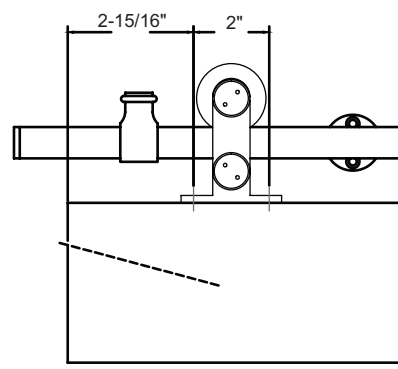
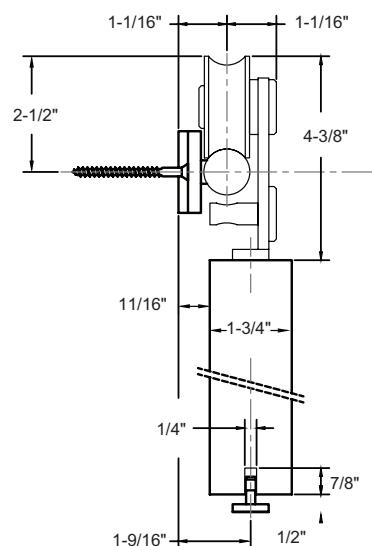
SLSSI-6 includes: (5) Wall Attachments

SLSSI-8 includes: (6) Wall Attachments

STAINLESS STEEL TOP MOUNT ROUND TRACK SYSTEM (WITH SOFT CLOSE)

| SKU | TRACK LENGTH |
|-------------|-----------------------------------|
| SLSSI-6-SC* | 78 ³ / ₄ " |
| SLSSI-8-SC* | 98 ⁷ / ₁₆ " |

* Soft Close / Open Hardware is Included for Both Directions in Addition to the SLSSI-6 and SLSSI-8 Complete Kit Contents



BARN DOOR SIDE MOUNT

SLIDING DOOR HARDWARE

- ▶ Fits 1 $\frac{3}{8}$ " To 1 $\frac{3}{4}$ " Thick Door Panel
- ▶ Brushed Stainless Steel 304
- ▶ Side Wall Mount
- ▶ Nylon Coated Stainless Steel Wheels for Smooth Operation
- ▶ Max Weight Load 220 lbs.
- ▶ 5 year Warranty
- ▶ Order Two Sets for Bi-parting Applications



STAINLESS STEEL SIDE MOUNT ROUND TRACK SYSTEM

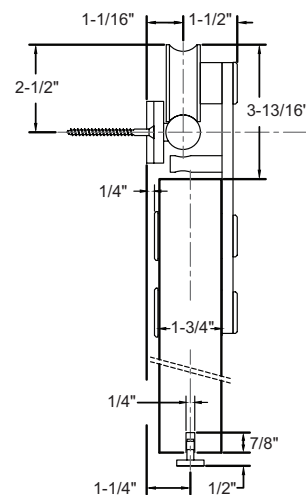
| SKU | TRACK LENGTH |
|---------|---------------------|
| SLSS2-6 | 78 $\frac{3}{4}$ " |
| SLSS2-8 | 98 $\frac{7}{16}$ " |

Complete Kits Include:

- | | |
|-------------|-----------------|
| (1) Track | (2) Door Stops |
| (2) Hangers | (1) Floor Guide |

SLSS2-6 includes: (5) Wall Attachments

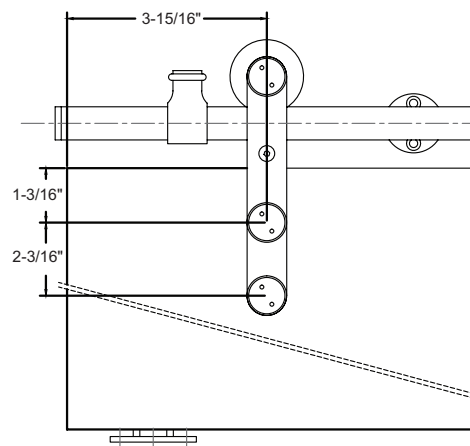
SLSS2-8 includes: (6) Wall Attachments



STAINLESS STEEL SIDE MOUNT ROUND TRACK SYSTEM (WITH SOFT CLOSE)

| SKU | TRACK LENGTH |
|-------------|---------------------|
| SLSS2-6-SC* | 78 $\frac{3}{4}$ " |
| SLSS2-8-SC* | 98 $\frac{7}{16}$ " |

* Soft Close / Open Hardware is Included for Both Directions in Addition to the SLSS2-6 and SLSS2-8 Complete Kit Contents



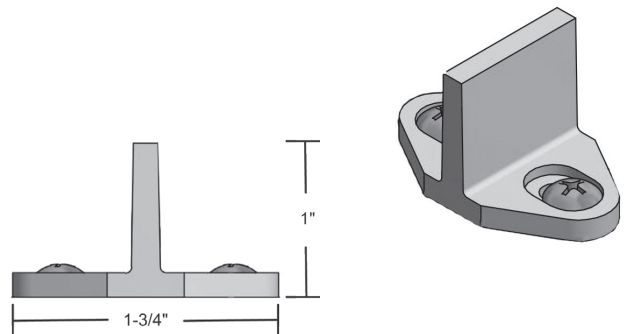
ACCESSORIES

SLIDING DOOR HARDWARE

FLOOR GUIDE

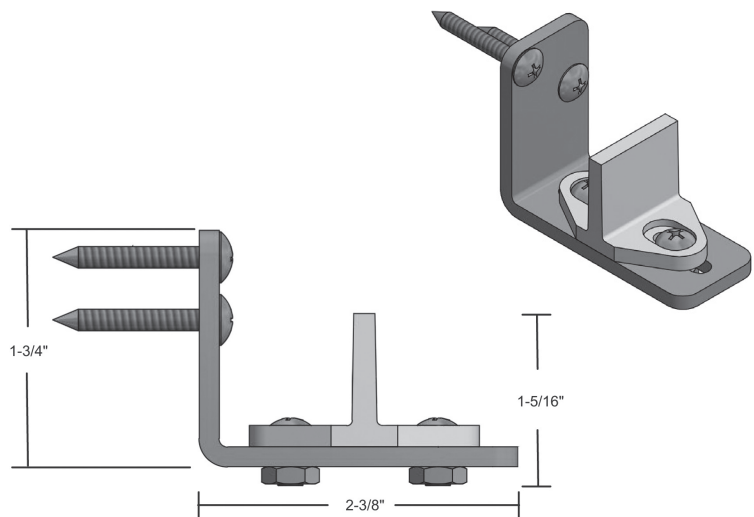
- Furnished Standard with Stainless Steel and Commercial Grade Aluminum Sliding Door Hardware Sets

| SKU | MATERIAL/FINISH |
|---------|-------------------------------------|
| SLSS-FG | Aluminum Dark Bronze Powder Coat |



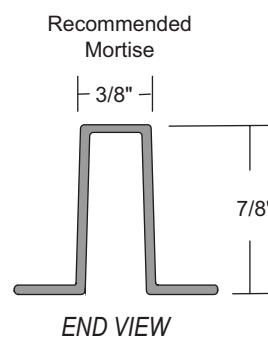
WALL MOUNTED GUIDE

| SKU | MATERIAL/FINISH |
|-------|---|
| SL-WG | Aluminum Floor Guide on Steel Bracket Dark Bronze Powder Coat #8-18 x 1-1/4" Truss Head Self-Tapping Screws |



BOTTOM CHANNEL GUIDE

| SKU | MATERIAL/LENGTH/COLOR |
|--------|------------------------------------|
| SL-BCG | Polypropylene 60" Dark Brown |



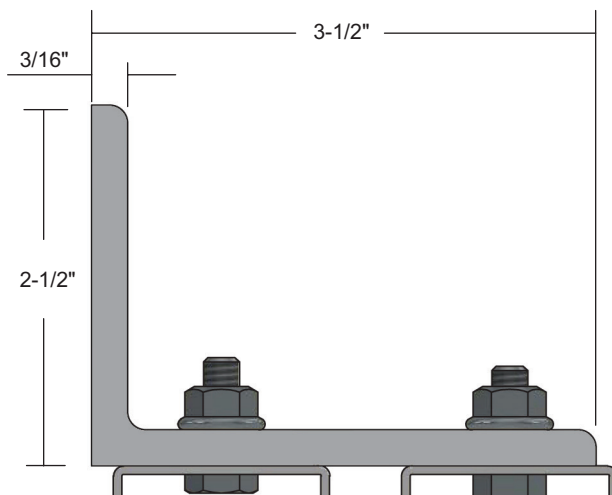
ACCESSORIES

SLIDING DOOR HARDWARE

SIDEWALL MOUNT BY-PASS BRACKET

| SKU | MATERIAL/LENGTH/COLOR |
|-----------|---------------------------------------|
| SWBP-BRKT | $\frac{3}{16}$ " Steel Gray Finish |

Use 3" from each end and not more than 24" on center

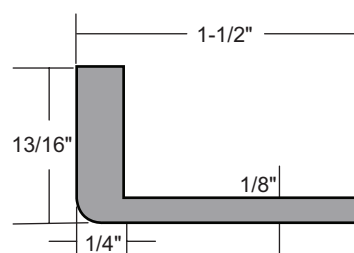


Fasteners not furnished

SIDEWALL MOUNT LOW-PROFILE BRACKET

| SKU | MATERIAL/LENGTH/COLOR |
|-------------|---|
| SWPD-LPBRKT | $1\frac{5}{8}$ " Length Mill Finish Aluminum |

Use 3" from each end and not more than 24" on center



ACCESSORIES

FOR ALUMINUM SLIDING DOOR HARDWARE

SOFT CLOSE

SC

For Single Sliding Aluminum Hardware Sets

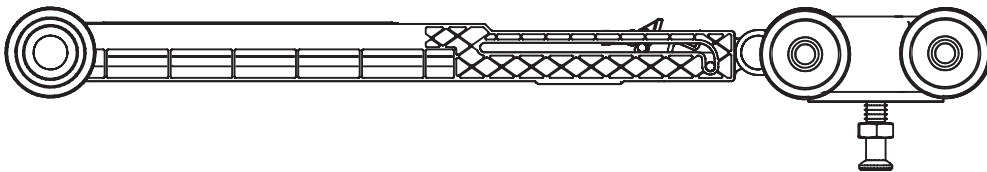
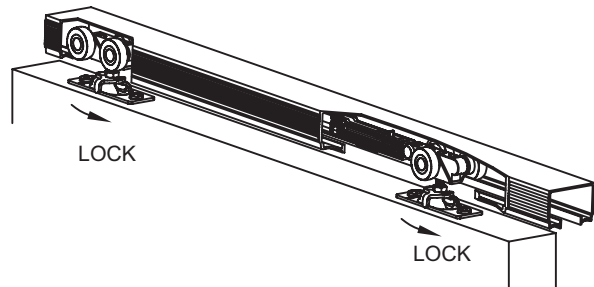
- Designed for Doors 120 lbs. – 150 lbs.
- Minimum Door Width When Using One Soft Close Device on a Single Door is 16"
- Minimum Door Width When Using Two Soft Close Devices for Soft Close Both Directions on a Single Door is 31"
- Slows Travel of the Door to Softly Close
- Soft Close for Single Sliding Aluminum Hardware Sets
- For Both Directions Order SCBY



SCBY

Set of (2) Soft Close

- Designed for Doors 120 lbs. – 150 lbs.
- Minimum Door Width When Using One Soft Close Device on a Single Door is 16"
- Minimum Door Width When Using Two Soft Close Devices for Soft Close Both Directions on a Single Door is 31"
- Slows Travel of the Door to Softly Close
- For By-Pass and Bi-Parting Sliding Aluminum Hardware Sets. For Both Directions Order (2) Sets SCBY
- For Soft Close Both Directions on Sidewall and Pocket Door Applications



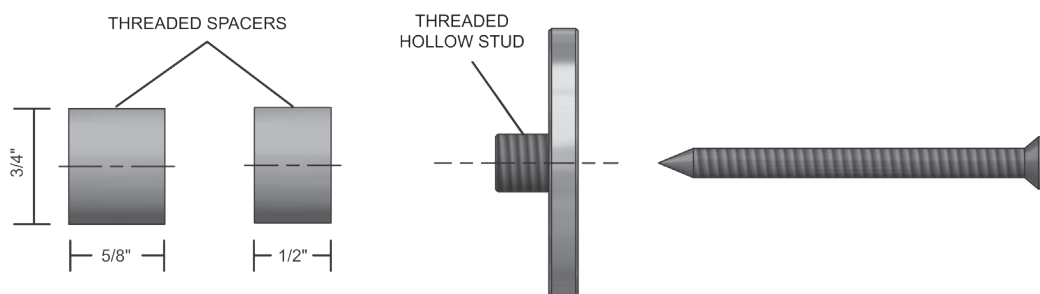
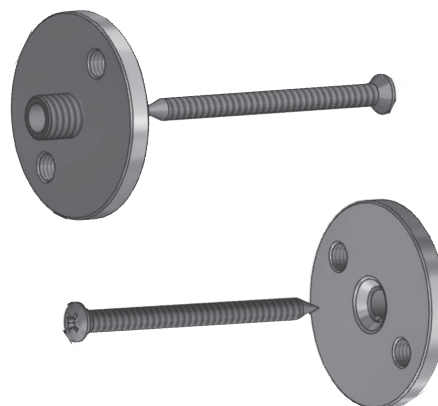
ACCESSORIES

FOR STAINLESS STEEL TRACK

DRYWALL SPACER

- ▶ Spacer Kits Include Two Sizes of Spacers
Allowing Installation Directly to the Blocking
Behind the Drywall
- ▶ The Finished Stainless Steel Plate
Accepts Mounting of the SLSS Track

| SKU | # OF SPACERS/TRACK LENGTH |
|------------|---------------------------|
| SLSS-DWS-6 | 5 Total Spacers/6' Track |
| SLSS-DWS-8 | 6 Total Spacers/8' Track |

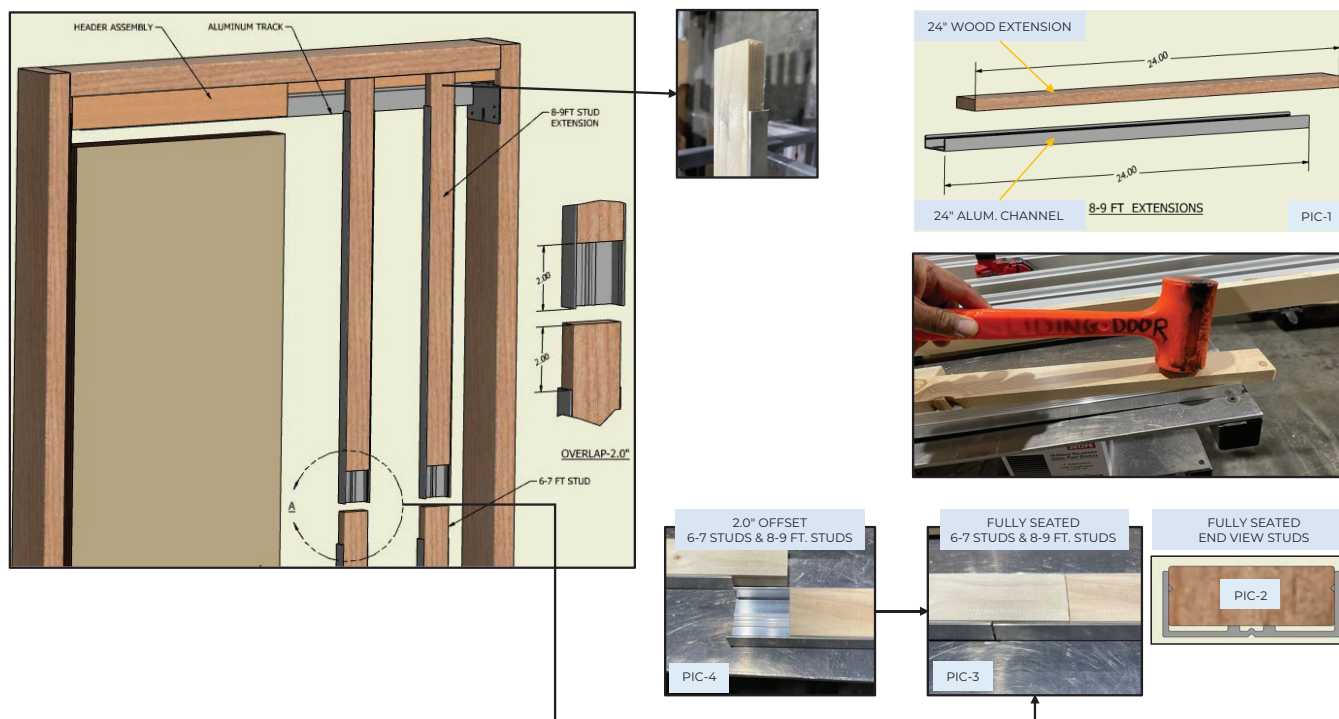


ACCESSORIES

POCKET DOOR KIT-7'-9' EXTENSION KIT

SLAL EXT KIT, SLAL EXT KIT 48"DR

- ▶ Pocket Door Frame Extension Kits Include:
 - + SLAL EXT KIT: 4 ea. Wood Frame Extensions, 4 ea. Aluminum Frame Extensions
 - + SLAL EXT KIT 48"DR: 6 ea. Wood Frame Extensions, 6 ea. Aluminum Frame Extensions
- ▶ Allows Standard PDKIT to be Extended for Use on Door Opening Heights up to 9'



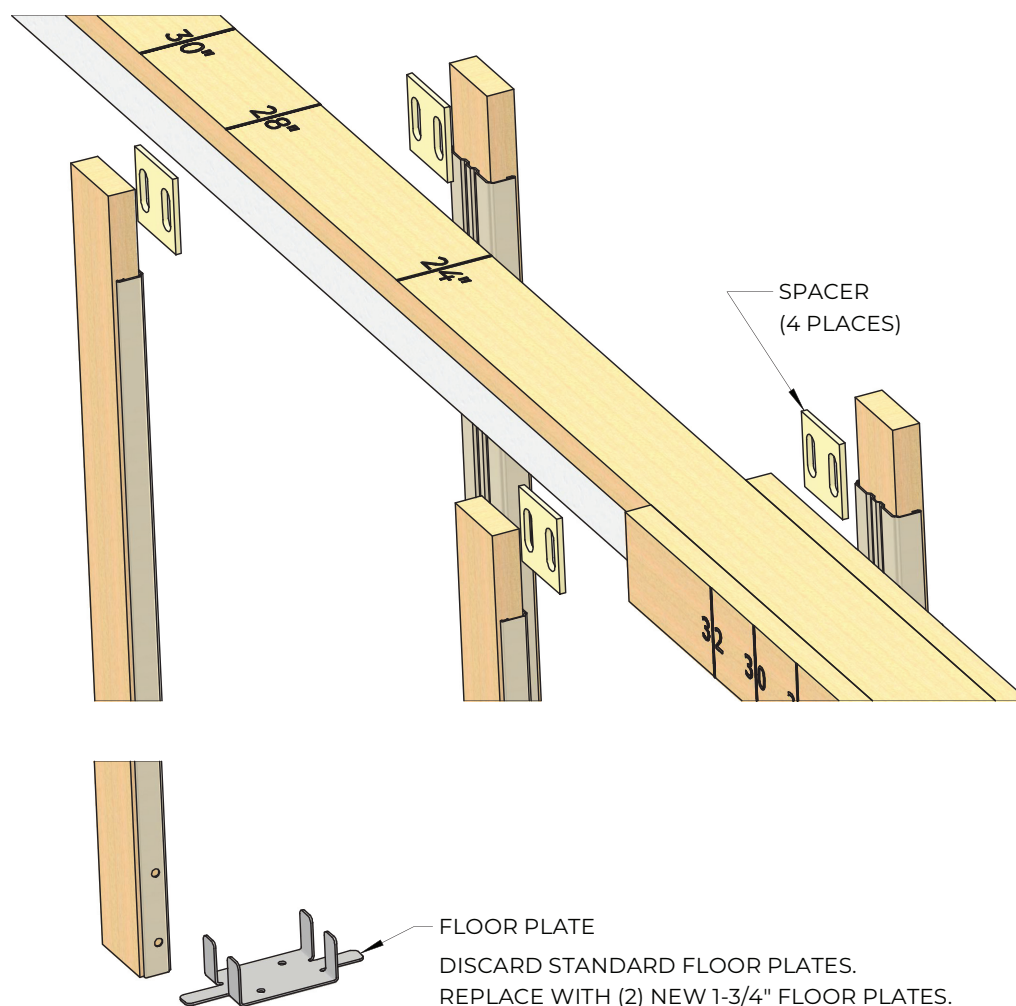
ACCESSORIES

SLIDING DOOR HARDWARE

ADAPTER KIT

- Used When Installing 1 $\frac{3}{4}$ " thick doors with SLAL-250-PDKIT, SLAL-250-PDKIT-EXT, SLAL-250-PDKIT-48"DR and SLAL-250-PDKT-EXT-48
- Includes 4 upper Spacers and 2 Floor Brackets to Accommodate for 1 $\frac{3}{4}$ " thick doors
- SLAL-250-PDKIT-48"DR and SLAL-250-PDKT-EXT-48 come with 6 split studs. SLAL-134-KIT comes with 4 spacers and 2 floor plates. Be sure to order enough SLAL-134-KIT for 6 split studs per opening

| SKU | MATERIAL/FINISH |
|--------------|--|
| SLAL-134-KIT | Nylon Spacers / Zinc Coated Steel Floor Plates |



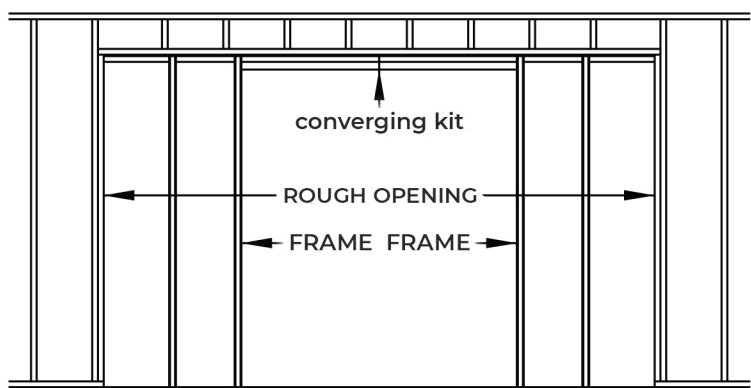
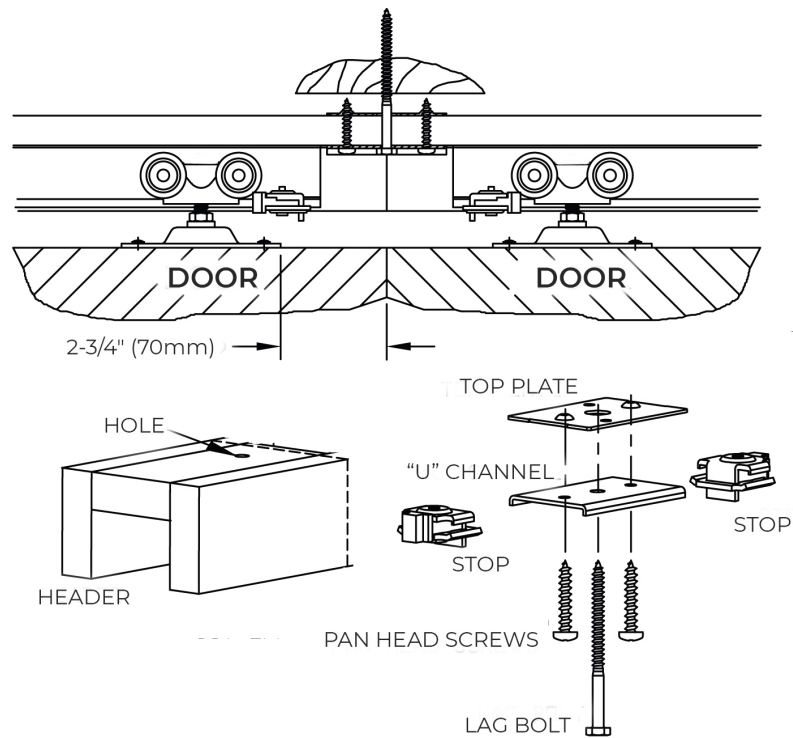
ACCESSORIES

SLIDING DOOR HARDWARE

CONVERGING KIT

- Used When Joining Two PDKIT Headers Together for a Bi-Part Pocket Opening
- Includes 2 Mounting Plates, 2 Pan Head Screws and 1 Lag Bolt

| SKU | MATERIAL/FINISH |
|---------------|-------------------|
| SLAL-CNVG-KIT | Zinc Coated Steel |





For the most up-to-date
Sliding Door Hardware
Catalog scan the QR code
or visit ngp.com.



ngp.com
1-800-NGP-RUSH

FAX: (800) 255-7874
QUOTES: quotes@ngp.com

NGP MEMPHIS

4985 East Raines Road
Memphis, TN 38118
orders@ngp.com

NGP VEGAS

4584 Calimesa Street
Las Vegas, NV 89115
vegasorders@ngp.com